

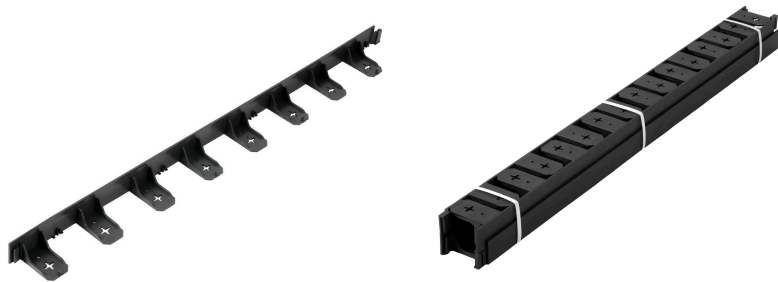
# GARDEN EDGING MULTIBORD SET

## TECHNICAL DATA SHEET

### PRODUCT INFORMATION

The MULTIBORD garden edging is a flexible finishing element designed for precise separation of different surface zones in gardens and functional outdoor areas. Made of durable recycled plastic, it is resistant to weather conditions and long-term use. The edging's modular design allows easy formation of straight lines and curves, making the product suitable for both simple layouts and more complex arrangements.

### PRODUCT GALLERY



### APPLICATION

The edging is used to separate surfaces made of paving stones, aggregates, bark, grass and other garden materials. It allows for precise delineation of borders for flower beds, paths, lawns, driveways and recreational areas. It ensures stable containment of materials within the designated area and provides an aesthetic finish to garden and outdoor layouts.

### PROPERTIES

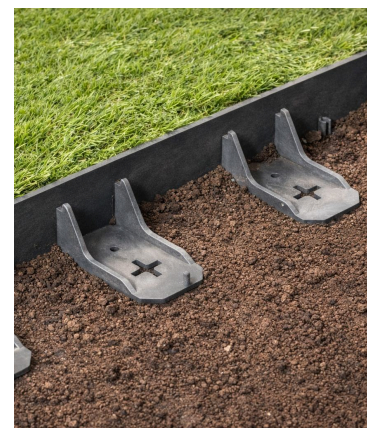
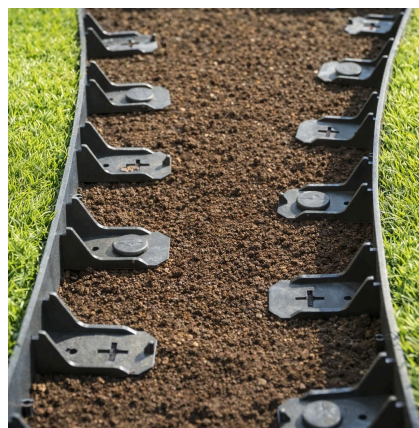
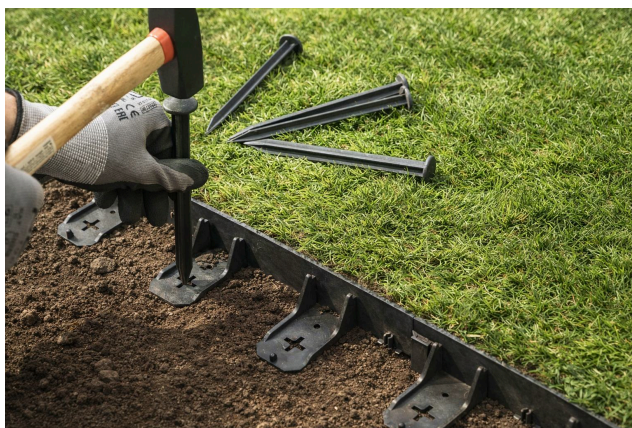
- a flexible structure allowing free shaping of surface contours,
- high resistance to moisture, low temperatures and UV radiation,
- stability achieved by anchoring to the ground using dedicated fixing pins,
- a design enabling quick connection of successive sections into a cohesive, aesthetic line,
- recycled material ensuring durability and an eco-friendly product.

### TECHNICAL PARAMETERS

Height	45 mm
Length	100 cm
Width	80 mm
Color	Black
Weight	280 g
Wall thickness	4 mm
Material	100% Recycled
Raw material	PE/PP
Dimensional stability	+/- 2%
Weight tolerance	+/- 5%
Number of mounting holes	7
Type of fixing anchors	Anchor ECO L-180 Anchor ECO L-250

### PACKAGING

Pallet size	103cm/103cm
Pallet height	2,1 m
Pallet weight	420 kg
Packaging	The set includes 4 edging units together with 12 anchors
Number of units per pallet	1144



The garden edging is not a construction product within the meaning of the construction products regulations. Therefore, the product does not require a declaration of conformity or to be subject to conformity assessment procedures provided for construction materials. A REACH declaration is available for the product