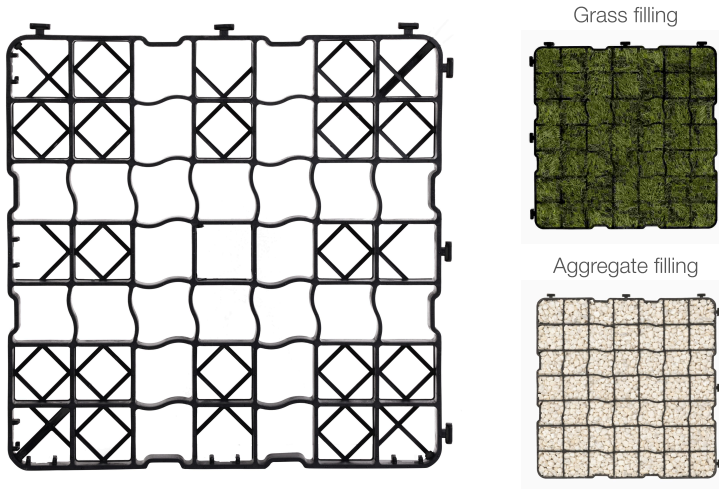


PRODUCT INFORMATION

Eco grid designed for the stabilization of roads, parking areas, and driveways. The eco grid structure is based on a regular arrangement of cells forming a rigid framework that stabilizes the ground. Individual modules are connected using built-in clips and slots, which snap together to form a uniform, interlocking surface. The Eco grid is made from top-quality recycled material, resistant to weather conditions, low temperatures, and UV radiation, ensuring durability and consistent performance properties during use.

PRODUCT GALLERY

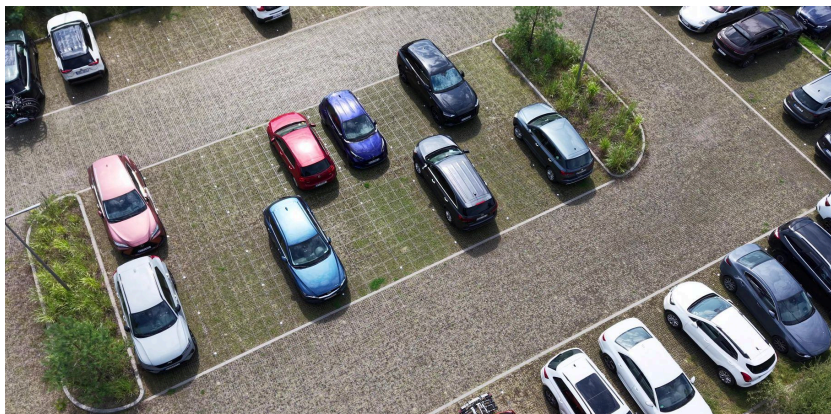


Eco grids can be filled with mineral aggregate or with a layer of fertile soil intended for grass seeding, creating a stable, biologically active green surface. For separating traffic lanes and marking parking spaces, NATAN PLAST plastic parking markers are used, compatible with the eco grid system.

PACKAGING

	STANDARD	SPECIAL*
Pallet size	120cm/100cm	120cm/100cm
Pallet height	2,1 m	2,5 m
Pallet weight	380 kg	465 kg
Number of units per pallet	240	276
Area per pallet (m ²)	60	69

*Available on request



TECHNICAL PARAMETERS

Height	40 mm
Dimensions	50cm/50cm
Color	Black
Weight	1,6 kg
External wall thickness	5,5 mm
Internal wall thickness	4 mm
Number of eco grid clusters	49
Cluster dimensions	66 mm/66 mm
Number of units per m ²	4
Weight 1m ²	6,4 kg
Material	PP/PE
Raw material	100% Recycled

PERFORMANCE PROPERTIES

Dimensional stability	± 3%
Minimum compressive strength	350 t/m ²
Minimum allowable axle load	>220kN/axle
Biologically active surface	89%
Runoff coefficient	0,12-0,20
Application for fire access roads	YES

CERTIFICATES AND DOCUMENTS

National Technical Assessment - Instytut Budowy Dróg i Mostów (Road and Bridge Research Institute)

National Declaration of Performance

EPD certificate

REACH declaration

PRODUCT APPLICATION

- parking areas
- internal and access roads
- roads and maneuvering areas
- road shoulders
- fire access roads
- airports and airstrips
- paddocks and animal runs
- extensive green roofs
- protection of slopes and embankments
- bicycle and tourist routes
- recreational and sports areas