

### PRODUCT INFORMATION

The HydroGravel Eco grid is characterized by very thick, strong cell walls that form a rigid and stable load-bearing structure. The wall cross-section provides high resistance to compression, point loads, and in-plane forces, making the system suitable for heavily and frequently used surfaces.

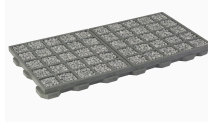
The modules are designed for industrial and infrastructural applications, including parking lots, maneuvering areas, loading yards, and technical sites, where maximum ground stabilization is required while maintaining surface permeability.

### PRODUCT GALLERY

Grass filling



Aggregate filling

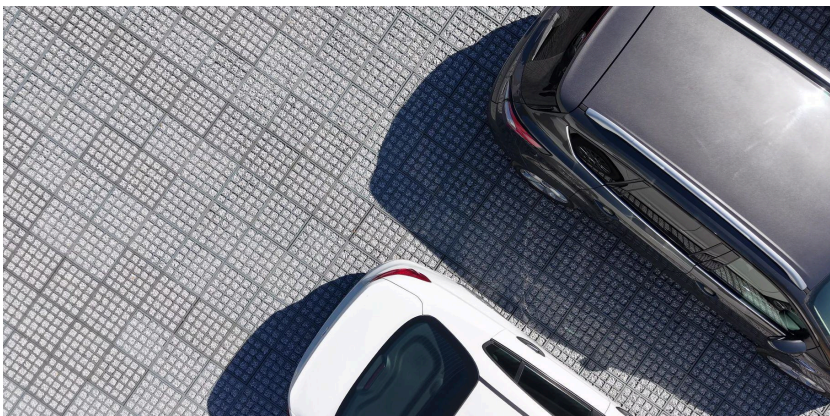


Eco grids can be filled with mineral aggregate or with a layer of fertile soil intended for grass seeding, creating a stable, biologically active green surface.

### PACKAGING

	STANDARD*
Pallet size	120cm/80cm
Pallet height	2.1
Pallet weight	600 kg
Number of units per pallet	90
Area per pallet (m <sup>2</sup> )	29

\* Possibility of special product Packaging up to a maximum pallet height of 2.6m



Eco grids are manufactured from material derived from 100% recycled content; therefore, slight shade variations may occur between pallets and even between layers on the same pallet — this is a natural result of the recycled raw material processing technology. Due to the specifics of the manufacturing process, minor dimensional variations may also occur between individual grids within the layers. To minimize the impact of this during installation, it is recommended to mix slightly smaller pieces with larger ones while laying.

### TECHNICAL PARAMETERS

Height	63 mm
Dimensions	40cm/80cm
Color	Grey
Weight	6,5 kg
External wall thickness	12 mm
Internal wall thickness	9 mm
Number of eco grid clusters	50
Cluster dimensions	67 mm/67 mm
Number of units per m <sup>2</sup>	3.1
Weight 1m <sup>2</sup>	20,1 kg
Material	PP/PE
Raw material	100% Recycled

### PERFORMANCE PROPERTIES

Dimensional stability	± 3%
Minimum compressive strength	850 t/m <sup>2</sup>
Minimum allowable axle load	>450kN/axle
Biologically active surface	86%
Runoff coefficient	0,12-0,20
Application for fire access roads	YES

### CERTIFICATES AND DOCUMENTS

National Technical Assessment - Instytut Budowy Dróg i Mostów (Road and Bridge Research Institute)

National Declaration of Performance

EPD certificate

REACH declaration

### PRODUCT APPLICATION

- parking areas
- internal and access roads
- roads and maneuvering areas
- infrastructure surfaces
- warehouse and industrial surfaces
- road shoulders
- fire access roads
- airports and airstrips
- paddocks and animal runs